



Simplis®

Simplifying Interior
Solutions

SOLECO CONCEALED STEEL FRAMES FOR TIMBER DOORS

Simplifying Technical Building Solutions



FITTING INSTRUCTIONS

www.simplis.co.uk



SOLECO CONCEALED STEEL FRAMES FOR TIMBER DOORS

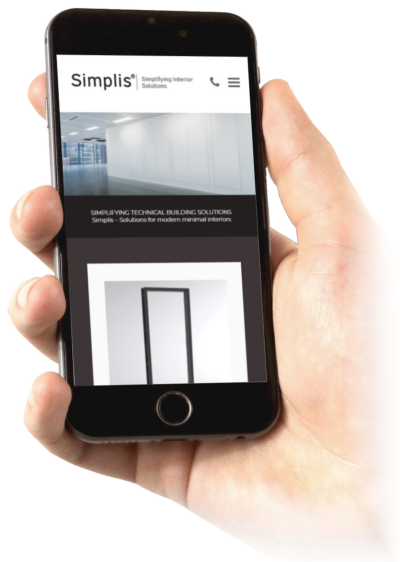
Thank you for choosing the Soleco Steel Frame made with care in our Lincolnshire factory. Please read this installation guide to help make the fitting process easier and see the video fitting guides on the website.

FR30S

FR60S

32dB

Scan the QR code to watch the fitting installation video. Just point your camera phone at the image.



REQUIRED TOOLS

Before you proceed with installation, you will require these tools:



Spirit Level



Cordless Drill
Screwdriver



Hammer &
Wood Chisels



4mm Allen
Key (Tectus)



Assistant



Plastic or
Timber Packers



Tape
Measure

BEFORE STARTING

Please see our recommendations below before installation.



This installation guide is for the Telescopic Concealed Soleco Frame for Timber Doors.

The frame is fitted to both sides of the wall. The 'Frame' side which incorporates the hinges, lock strike and seal is fitted second. The other side is the 'Expander' side. The 'Frame' side is screwed to the 'Expander' side.

Both sides are made up of a header and two jambs. Different wall widths require different width Expander sides to fit around your wall. The telescopic action allows for a +/- 7mm tolerance in the wall width to ensure a tight fit and to allow for variations in the wall construction.

Delivery

Soleco Door Frames are delivered flat- packed in protected cardboard boxes with larger quantities delivered on oversized pallets. Please check your delivery note corresponds to your order.



CONCEALED FRAME INSTALLATION

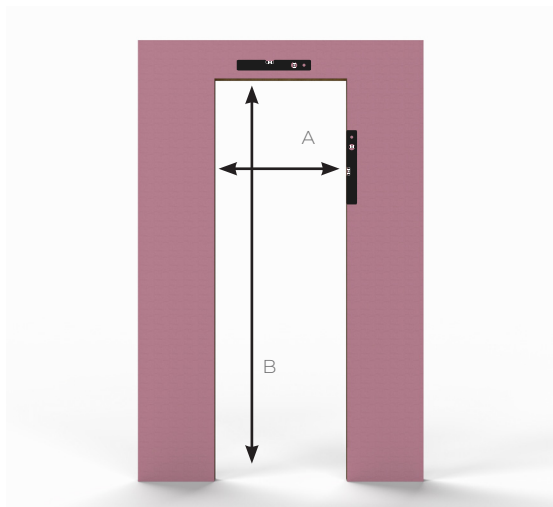
1. CONSTRUCT THE OPENING

Prepare the opening square and plumb.

A = Outside frame dimension + 5mm for clearance.

B = Outside frame dimension + 5mm for clearance.

(Measurements achieve a tight fit with appropriate packers)



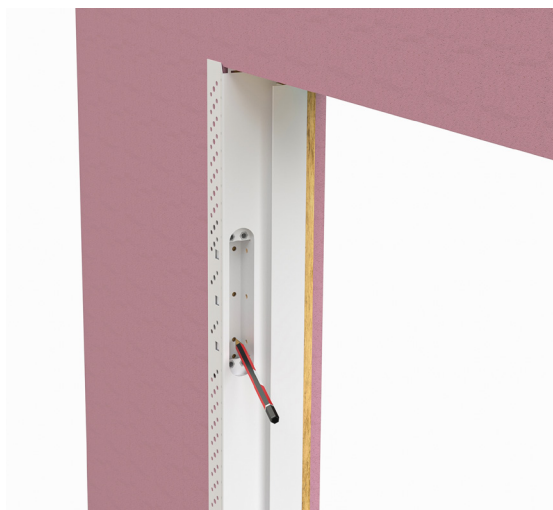
2. MARK THE HINGE POSITIONS

3D Concealed Hinge

Offer the hinge jamb to the opening as a template and mark the hinge positions with a pencil.

Interleafed Hinge

Skip this step.



3. MARK THE CUTOUTS

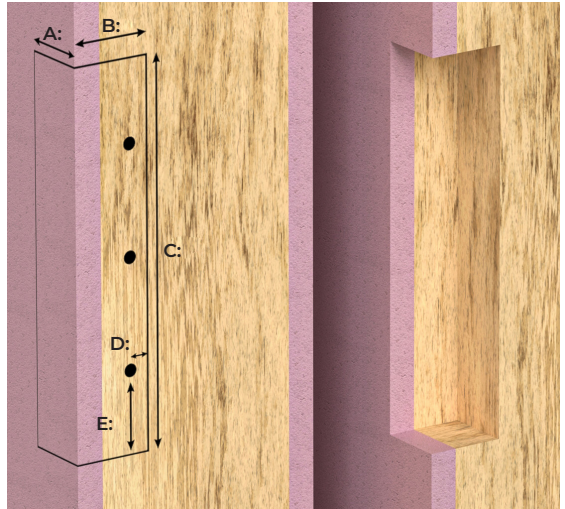
3D Concealed Hinge

Use the jamb or the paper template on the back page to mark the hinge cutout and the lock strike cutout.

- A: 31mm
- B: 35mm
- C: 175mm
- D: 8.75mm
- E: 37.5mm

Interleafed Hinge

Skip this step.



4. HOW YOUR APERTURE SHOULD LOOK

This is how your wall aperture should look.

In the example we have also cut out for the lock keep using the jamb to mark the position or use the template on the back page.



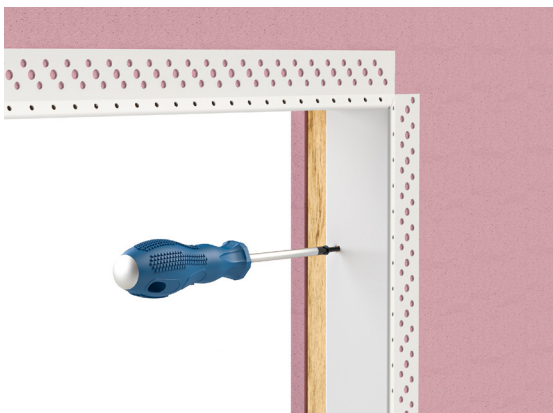
5. JOIN THE EXPANDER SIDES

Join the expander parts of the frame on a flat surface.



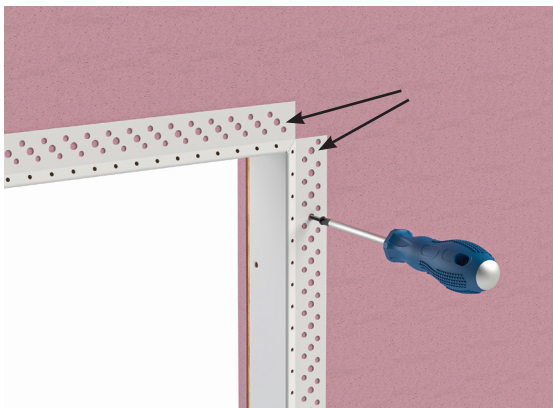
6. FIX THE EXPANDER SIDE INTERNALLY

Fix the expander side internally using the internal fixing points. Use packers to ensure plumb and square.



7. FIX THE EXPANDER SIDE EXTERNALLY

Fix the expander side externally using holes in the external bead. Fix at 200mm centres and double screw in each corner. Check level and plumb.



8. JOIN THE FRAME SIDES

Join the frame sides by bending over the steel tabs in each corner. Use a hammer.



9. OFFER THE FRAME TO THE APERTURE

Offer the frame side to the aperture.



10. LINE UP THE FIXING HOLES

Use the holes in the seal channel. Line up the fixing holes between the two frame sides.



11. FIX THE FRAME SIDE TO THE EXPANDER SIDE

The frame side now screws to the expander side.
side.



12. FIX THE HINGE RECEIVER

3D Concealed Hinge

Fix the hinge receiver internally to the structure. Do not distort the frame.

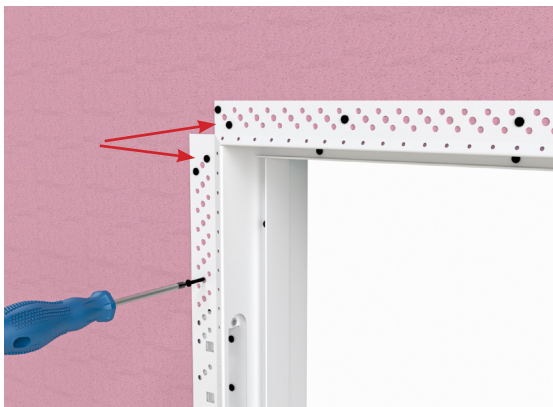
Interleafed Hinge

Skip this step.



13. FIX THE FRAME SIDE EXTERNALLY

Check level and plumb then fix the frame side flanges.



14.

TAPE & JOINT/ PLASTER

Use a scrim cloth and skim or tape and joint.

* Offer up or test hang the door before this step.



15.

FIT THE SEALS

Fit the seals into the channel. Seals can be black, white or grey.



16.

HANG YOUR DOOR

Hang your door. 3D concealed hinge shown.



17. FIX THE STRIKEPLATE

Fix the strikeplate.



18. FINISHED

Your installation is now complete.



DOUBLE DOORS

Concealed Frames for Double Doors. Follow the same steps as the Single Door. Ensure the frame is fitted plumb and square.



ALTERNATIVE HINGE TYPES



Face fixed interleaved hinge with visible knuckle.

Skip steps 2, 3, 4 & 12.



Alternative step 16

Hang your door.

NEED ADVICE

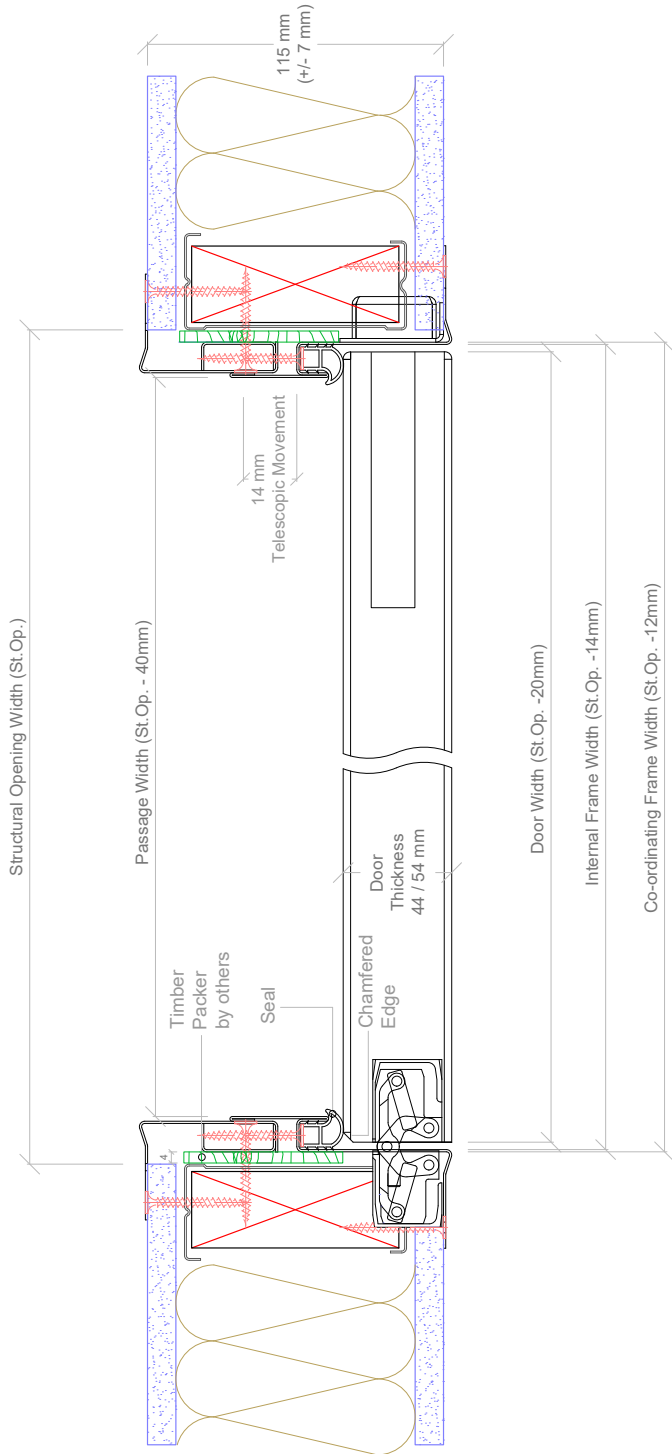
If you require any assistance in fitting your Soleco Steel Door Frame or have any other queries, please contact our friendly technical sales team. If you require a product that you cannot find on our website, please call to see if we can help you with your project.

Tel: 0345 556 4110

Email: sales@simplis.co.uk



If you would like to see more of our products visit our website at www.simplis.co.uk.



FD30S
Tectus Hinge
90mm Stud Shown
Wall width variable

Simplifying Interior
Solutions

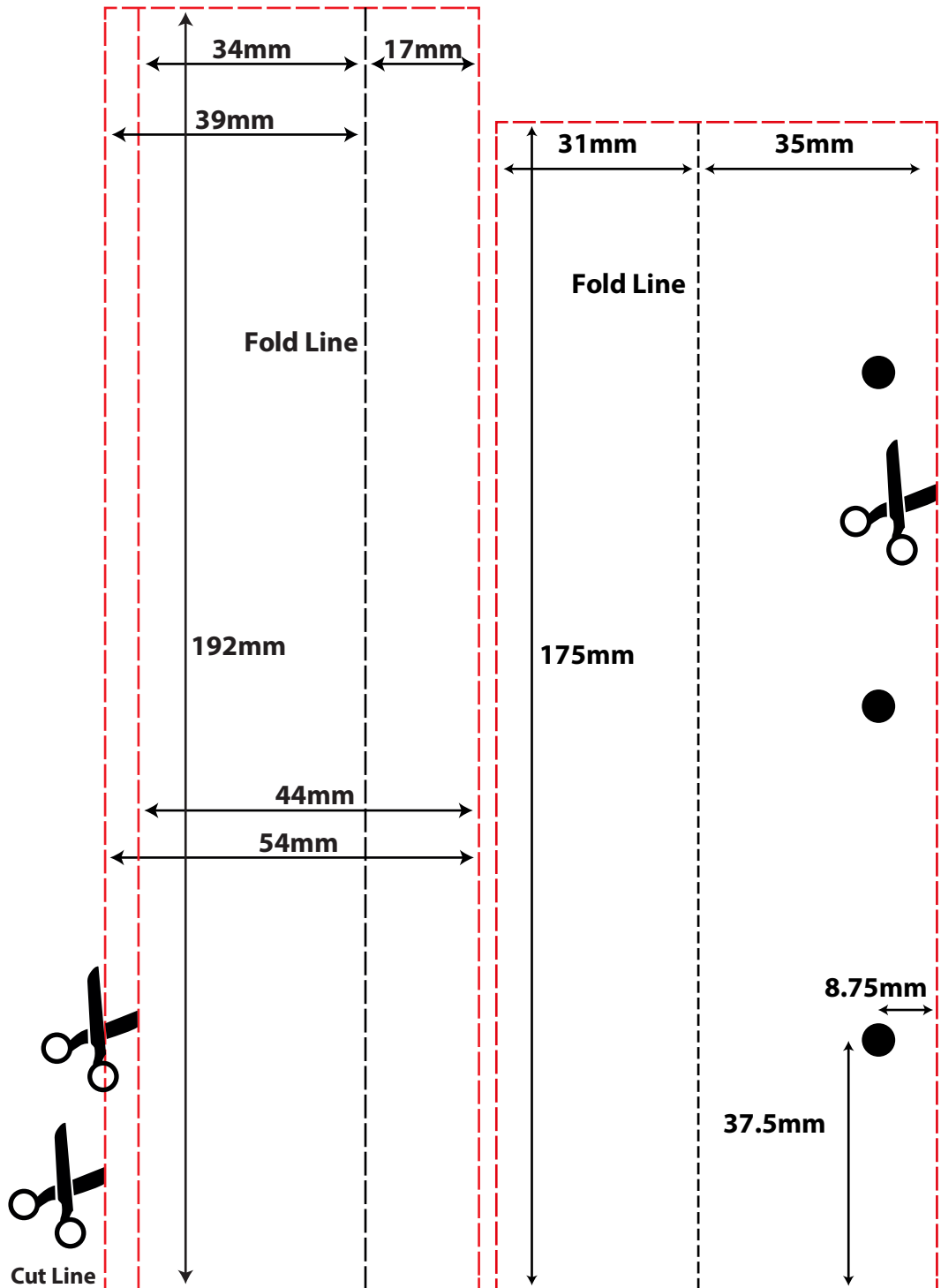
Simplis

0345 556 4110
www.simplis.co.uk
sales@simplis.co.uk

Soleco R143 Telescopic Flat Pack
Concealed Door Frame

Author : WTSC
 Date : 26/01/21
 Sheet : 1 of 3
 Scale 1: 1

Dwg No. :
143_03_03_07_03



Template for 200mm Lock Strikebox
for 44mm and 54mm doors

Template for Tectus TE
340 Concealed Hinge



Simplis®

Simplifying Interior
Solutions

© 2021 by Simplis. All rights reserved

Where colour and finish samples are shown within this document limitations in the reprographics process mean absolute colour accuracy cannot be guaranteed. Where colour matching is critical, a sample of the material can be provided on request. Simplis reserves the right to alter specification and designs without prior notice.

www.simplis.co.uk